

**Boulder City Conservation Easement Weed Sentry
MSHCP Annual Project Review
Project 2011-NPS-910R**

**Tarl Norman
Supervisory Biologist
Lake Mead Exotic Plant Management Team**

Project Overview

- Inter-local Agreement between Clark County and NPS (approved September 2016)
- Conduct surveys of routes within the BCCE to detect non-native (exotic) vegetation/weeds
- Conduct targeted weed treatments
- Note native plants observed
- Up to 95 miles of roads, 10 meters on either side of road edge
- Winter and Summer surveys
- Control incipient weeds/early detection rapid response

Project Goal

Support vegetation management and maintenance activities in the BCCE to maintain and improve desert tortoise habitat.



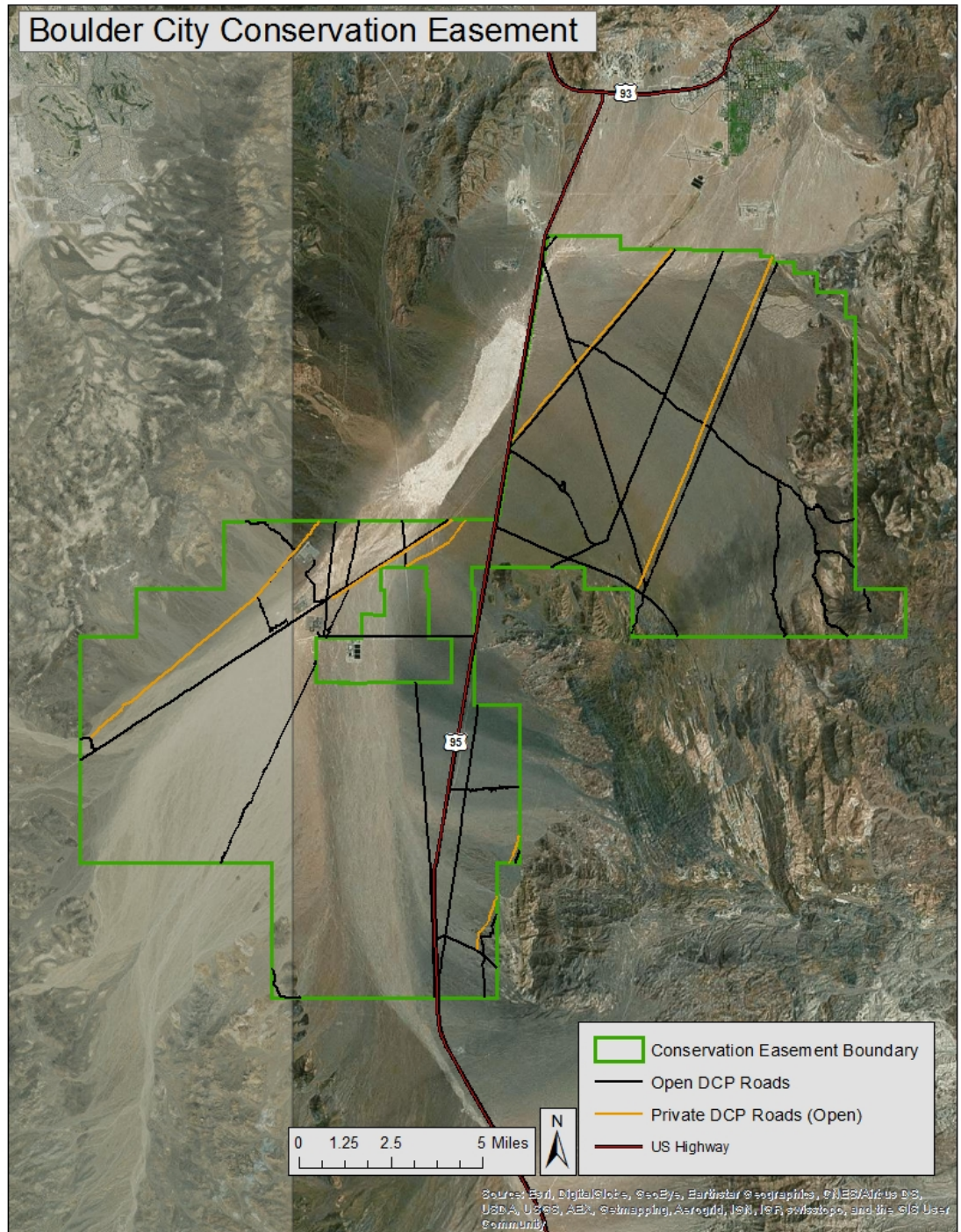
Tortoise photo courtesy of National Park Service

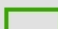
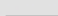




Summary of Accomplishments

- Annual Work Plan completed
- Data Management Plan completed
- Completed initial winter weed survey and treatments
- Spring/Summer weed survey and control in progress

Boulder City Conservation Easement



-  Conservation Easement Boundary
-  Open DCP Roads
-  Private DCP Roads (Open)
-  US Highway

0 1.25 2.5 5 Miles



Sources: Esri, DigitalGlobe, GeoEye, Earthstar Geographics, CNES/Airbus DS, USDA, USGS, AeroGRID, IGN, IGN, swisstopo, and the GIS User Community

GPS Mapping



Roadside Russian Thistle Control





Treated Russian Thistle



Sahara Mustard

Brassica tournefortii



Tamarisk Leaf Beetle

Diorhabda carinulata

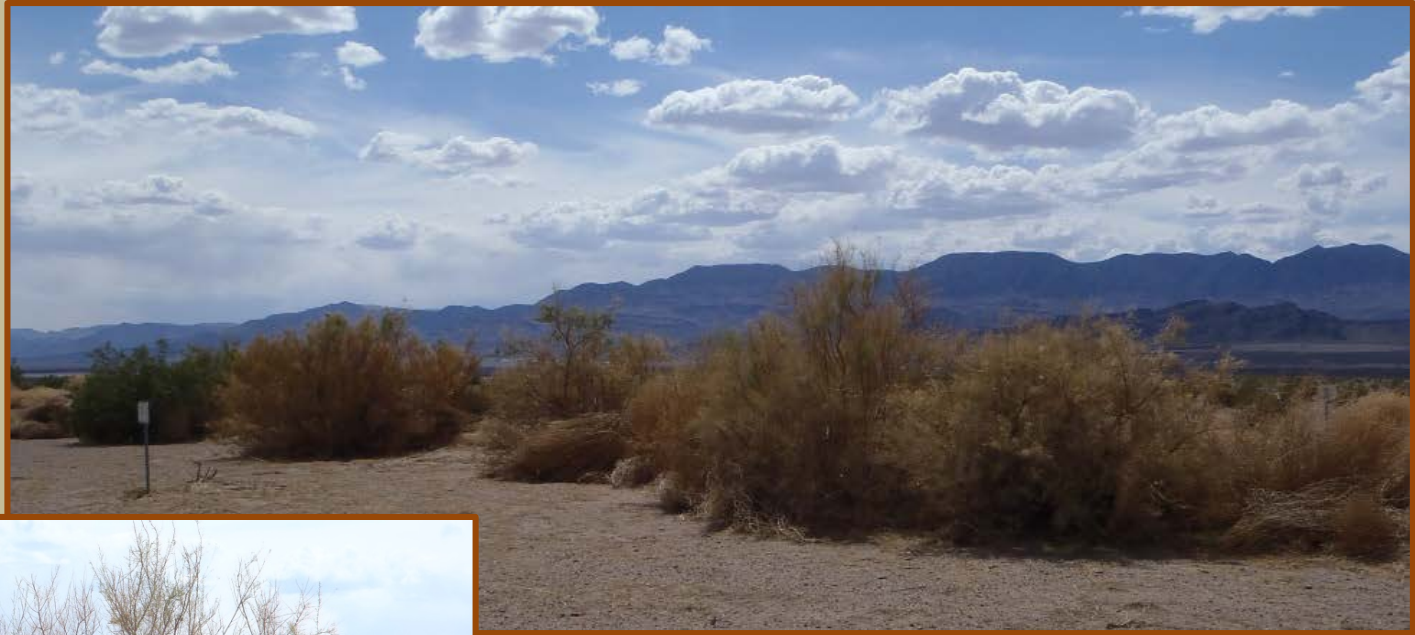




Larvae



Tamarisk Defoliation



Big Galleta Grass

Pleuraphis rigida



Chinchweed

Pectis papposa



Dune primrose

Oenothera deltoides var. *deltoides*



Acknowledgements

- *This work was supported by the Clark County Desert Conservation Program and funded by Section 10, as project #2011-NPS-910R, to further implement or develop the Clark County Multiple Species Habitat Conservation Plan*
- John Brekke, Clark County Desert Conservation Program
- Tim Federal, NPS Project Leader and Data Manager
- NPS EPMT Staff: Ian Torrence, Melinda Hughes, Nathan Schwarting, Curt Deuser, Ashley Kroon